

Quick Disconnect Battery Terminal

Simply twist the convenient knob and cut off power to your starter.

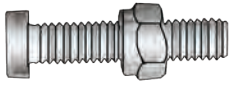
Part No.	Description	Qty / Pkg
BQD-S	Quick Disconnect	1pc/pkg
BQD-X	Quick Disconnect	10pc/pkg



Optional fused jumper wire rated at 5 amps supplies power to your vehicle computer, clock, radio, etc. Fits top mount batteries only. **Fused jumper wire must be purchased separately.**

Part No.	Description	Qty / Pkg
BQDILFH5	Power supply for BQD	1pc/pkg

Battery Bolts



BBN112S



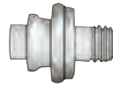
SMBL



SMBL-SPR



SMB



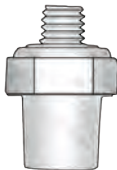
SMB-OEM



BBN38-X

Part No.	Description	Qty / Pkg
BBN112S-X	1-1/2" Lx5/16" Shoulder Nut	pkg/10
BBN112S	1-1/2" Lx5/16" Shoulder Nut	pkg/100
SMBL-X	Sidemount Bolt 3/8" x 1" Long	pkg/10
SMBL-SPR-X	Spacer Only – No bolt	pkg/10
SMB-X	Sidemount Bolt 3/8" x 7/16"	pkg/10
SMB	Sidemount Bolt 3/8" x 7/16"	pkg/100
SMB-OEM-X	Sidemount Bolt 3/8" x 5/16" Hex	pkg/10
SMB-OEM	Sidemount Bolt 3/8" x 5/16" Hex	pkg/100
BBN38-X	3/8" Female cap nut	pkg/10

Male and Female Charging Posts

Positive and Negative
Male ThreadUniversal
Female Thread

Part No.	Description	Qty / Pkg
BTCP-S	Male Post 1 Neg/1 Pos	2pcs/pkg
BTCP-N-X	Male Negative Post	10pcs/box
BTCP-P-X	Male Positive Post	10pcs/box

Part No.	Description	Qty / Pkg
FTCP-S	Female Post	2pcs/pkg
FTCP-X	Female Post	10pcs/box

Top Mount Battery Cable Assemblies

Mize Wire battery cables have pressure-cast eyelets made of corrosion resistant, special pressure cast alloy. The castings form the copper strands and terminals into a solid mass, providing a perfect electrical bond. All battery cables have a 3/8" eyelet.

Bulk Part No.	Packaged Part No.	Ga.	Length
X410	X410-S	4 ga	10"
X415	X415-S	4 ga	15"
X420	X420-S	4 ga	20"
X425	X425-S	4 ga	25"
X432	X432-S	4 ga	32"
X438	X438-S	4 ga	38"
X443	X443-S	4 ga	43"
X448	X448-S	4 ga	48"
X456	X456-S	4 ga	56"
X465	X465-S	4 ga	65"
X472	X472-S	4 ga	72"

Bulk Part No.	Packaged Part No.	Ga.	Length
X210	X210-S	2 ga	10"
X215	X215-S	2 ga	15"
X220	X220-S	2 ga	20"
X223	X223-S	2 ga	23"
X232	X232-S	2 ga	32"
X238	X238-S	2 ga	38"
X243	X243-S	2 ga	43"
X248	X248-S	2 ga	48"
X253	X253-S	2 ga	53"
X258	X258-S	2 ga	58"
X272	X272-S	2 ga	72"



Switch to Starter Cables and Golf Cart Cable Assemblies

Bulk Part No.	Packaged Part No.	Description	Eyelet	Ga.	Length
SS0008-50		Starter Cable - Black	3/8"	2/0	8"
SS0009-50		Starter Cable - Black	3/8"	2/0	9"
SS0012-50		Starter Cable - Black	3/8"	2/0	12"
SS0024-50		Starter Cable - Black	1/2"	2/0	24"
SS410	SS410-S	Switch to Starter/Auto	3/8"	4 ga	10"
SS420	SS420-S	Switch to Starter/Auto	3/8"	4 ga	20"
SS424	SS424-S	Switch to Starter/Auto	3/8"	4 ga	24"
SS432	SS432-S	Switch to Starter/Auto	3/8"	4 ga	32"
SS440	SS440-S	Switch to Starter/Auto	3/8"	4 ga	40"
SS449	SS449-S	Switch to Starter/Auto	3/8"	4 ga	49"
SS608	SS608-S	Golf Cart Cable	5/16"	6 ga	8"
SS610	SS610-S	Golf Cart Cable	5/16"	6 ga	10"
SS612	SS612-S	Golf Cart Cable	5/16"	6 ga	12"
SS614	SS614-S	Golf Cart Cable	5/16"	6 ga	14"
SS618	SS618-S	Golf Cart Cable	5/16"	6 ga	18"
SS624	SS624-S	Golf Cart Cable	5/16"	6 ga	24"



Boots



**ADDITIONAL BOOTS
AVAILABLE!**

**Contact Us at
(800) 835-1016 Today!**

Pkg	Description	Qty / Pkg
Pkg 10	WBBC1020TP-10-X	1/0 & 2/0 GA Top Post Boot Red
Pkg 10	WBBC1020TP-50-X	1/0 & 2/0 GA Top Post Boot Black
Pkg 10	WBBC12R-10-MOD-X	1 & 2 GA Ring Red Boot
Pkg 10	WBBC12R-50-MOD-X	1 & 2 GA Ring Black Boot
Pkg 10	WBBC4TP-10-X	4 ga Red Boot
Pkg 10	WBBC4TP-50-X	4 ga Black Boot
Pkg 10	WBBC64RSB-10-X	6ga Ring Red Boot
Pkg 10	WBBC6RLT-10-X	6ga Ring Red Boot Left Post

Diesel Truck Dual Battery Cables



Part No.	Qty / Pkg	Description	Length
X00108	pkg/1	Fits Ford Diesel Trucks, Prior to 1992 Reference to Ford #WC8870 2/0 battery cable	108"
X00105	pkg/1	Fits Ford Diesel Pickup with dual battery from 1992-1994. Reference to Ford #WC8987 2/0 battery cable	105"
X00109	pkg/1	Fits Ford Diesel Pickup with dual battery, power-stroke models from 1995-1997. Reference to #WC9316 2/0 battery cable.	109"
X00120	pkg/1	Fits Ford Diesel Pickup universal 2/0 battery cable. from 1987 to 2002	120"
X-062	pkg/1	Fits Dodge Diesel cable 1/0 ga. (Mid90's)	62"

Battery Cable Assortment

Mize Wire battery cable assortments are a combination of the most popular lengths in 4 gauge and 2 gauge wire with cast alloy eyelets and lead terminals. Also has 4 gauge side mount battery cables. Assortment comes with a metal rack.

Part No.	Description
ABC4	4 ga battery cables Contain 2 ea. of the following items: X410; X415; X420; X425; X432; X438
ABC2	2ga. battery cables Contains 2 ea. of the following items: X210; X215; X220; X223; X232; X238

Battery Terminal Felt Washers

Protect against corrosion. Install between battery and battery terminals. Pretreated at factory and sealed in a jar.



Part No. BTFW
50 Red / 50 Black

Part No. BTFW-S
1 Red / 1 Black



Part No. BTFS
50 Red / 50 Black

Part No. BTFS-S
1 Red / 1 Black

Bonding Straps



Braided bonding straps

Part No.	Description
BBS408	4 ga x 8"
BBS412	4 ga x 12"

Heavy Duty Copper Lugs

Part No.	Description
HDCL1038-X	1/0 ga. 3/8" Hole (Black)
HDCL2038-X	2/0 ga. 3/8" Hole (Orange)
HDCL438-X	4 ga. 3/8" Hole (Gray)
HDCLU2138-X	1-2 ga. Universal 3/8" Hole (Pink)
HDCL1012-X	1/0 ga 1/2" Hole (Black)
HDCL2012-X	2/0 ga 1/2" Hole (Orange)

Standard Package (X)-10 pcs.

Use Suffix (K)-1000 pcs.



Bench Style Lug Crimper



Lift lever to raise plunger, insert lug, then release & hit with hammer.

Heavy Duty Splice Connectors



Both the heavy-duty copper lugs and splice connectors are made from 99.9% copper. Heavier wall thickness and wider pads for greater heat shrink when soldered. Electro-tin corrosion resistance, longer barrels for double crimping when necessary, color coded to identify correct gauge.

Part No.	Description
HDCLB4-X	4 ga. Butt Connector (Gray)
HDCLBU21-X	1-2 ga. Universal Butt (Pink)
HDCLB20-X	2/0 ga. Butt Connector (Orange)

Standard Package (X)-10 pcs.

Use Suffix (K)-1000 pcs.

Part No. BSLC

Crimps battery lugs 8 gauge - 3/0, 4/0 gauge

Compact Wire Cutter



Part No. BCC9

Cuts up to 2/0 gauge wire

Copper Crimpable Battery Terminals

Part No.	Description
CCBTS21P-X	2-1 ga. positive straight (Pink)
CCBTS10P-X	1/0 ga. positive straight (Black)
CCBTS20P-X	2/0 ga. positive straight (Orange)
CCBTS21N-X	2-1 ga. negative straight (Pink)
CCBTS10N-X	1/0 ga. negative straight (Black)
CCBTS20N-X	2/0 ga. negative straight (Orange)
CCBTS4U-X	4 ga. straight universal (Gray)
CCBTS6U-X	6 ga. straight universal (Blue)



Straight Style / Standard Package
10 pcs

Hand Held Crimper



Part No. BCLC

Hex Crimping Tool
Crimps lugs 6 gauge - 4/0 gauge.
Take to the job site.

Part No.	Description
CCFBTS20P-X	2/0 ga. positive flag (Orange)
CCFBTS20N-X	2/0 ga. negative flag (Orange)



Flag Style / Standard Package
10 pcs

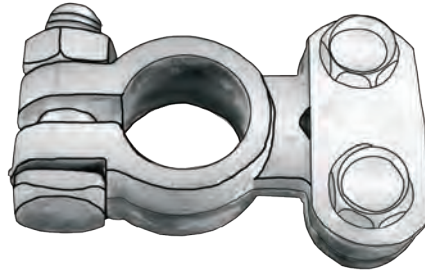
Part No.	Description
CCBT20LHP-X	2/0 ga. LH positive (Orange)
CCBT20LHN-X	2/0 ga. LH negative (Orange)
CCBT20RHP-X	2/0 ga. RH positive (Orange)
CCBT20RHN-X	2/0 ga. RH negative (Orange)



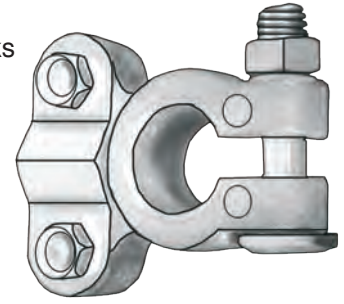
Left and Right Handed Style
Std. Pkg. - 10 pcs.

Lead Battery Terminals

Cars and
Pickup Trucks
4-2 gauge wire



Heavy Duty Trucks
1-4/0 gauge wire

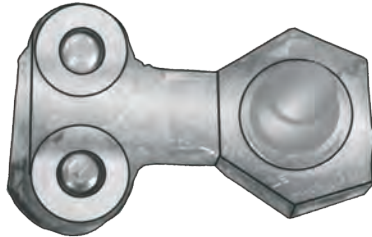


Part No.	Description	Std/Pkg	Qty / Pkg
BT444	Universal	Card/10	10 cards

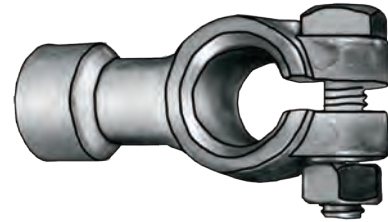
Part No.	Description	Std/Pkg	Qty / Pkg
T444	Universal	Card/10	10 cards

Embedded Nut

- Removable plate for easy assembly
- Fits all top-mount batteries
- Holds cable or strap
- Universal; fits positive or negative posts



Part No.	Description	Qty / Pkg
BTSM	Side Mount	card/8
4 gauge - 2 gauge wire		



Part No.	Description	Qty / Pkg
BTST	Side Mount Adapter	pkg/10
5 Negative / 5 Positive		

Marine Battery Terminals

Part No.	Description	Qty/Pkg
BTMT	5 Positive & 5 Negative	pkg/10
5/16" Stud & 3/8" Stud		

